

Green 2

R E S I D E N C E S

DASMARIÑAS, CAVITE

P H I L I P P I N E S





Building Facade, Artist's Perspective

BALANCED STUDY-AND-PLAY LIFE

Breeze through your college years as you live in a home that passes all the marks when it comes to convenience, location, security and amenities. Green 2 Residences is located in a bustling community advantageous to students looking for a place to call their own as they go through this exciting point in their life. This three-tower development has 19 floors featuring its own commercial area and well-designed amenities that offer conducive environment for a balanced work-and-play lifestyle.

LOCATION

With its convenient location right within University Town, students are in close proximity to top educational institutions in Dasmariñas, Cavite. It is in the middle of schools like De La Salle Health Sciences Institute, Emilio Aguinaldo College, and DLSU Dasmariñas. Strategically located along Congressional Road, transportation is easy with many options for those traveling either by private vehicle or public transport and offers the advantage of being close-by three SM developments: Hypermarket, Savemore and SM City Dasmariñas.



Wifi Ready
Study Lounges



Front Desk
Doorman Services



24-Hour
Security



Professional
Property Management



Commercial Strip





Fitness Gym, Artist's Perspective

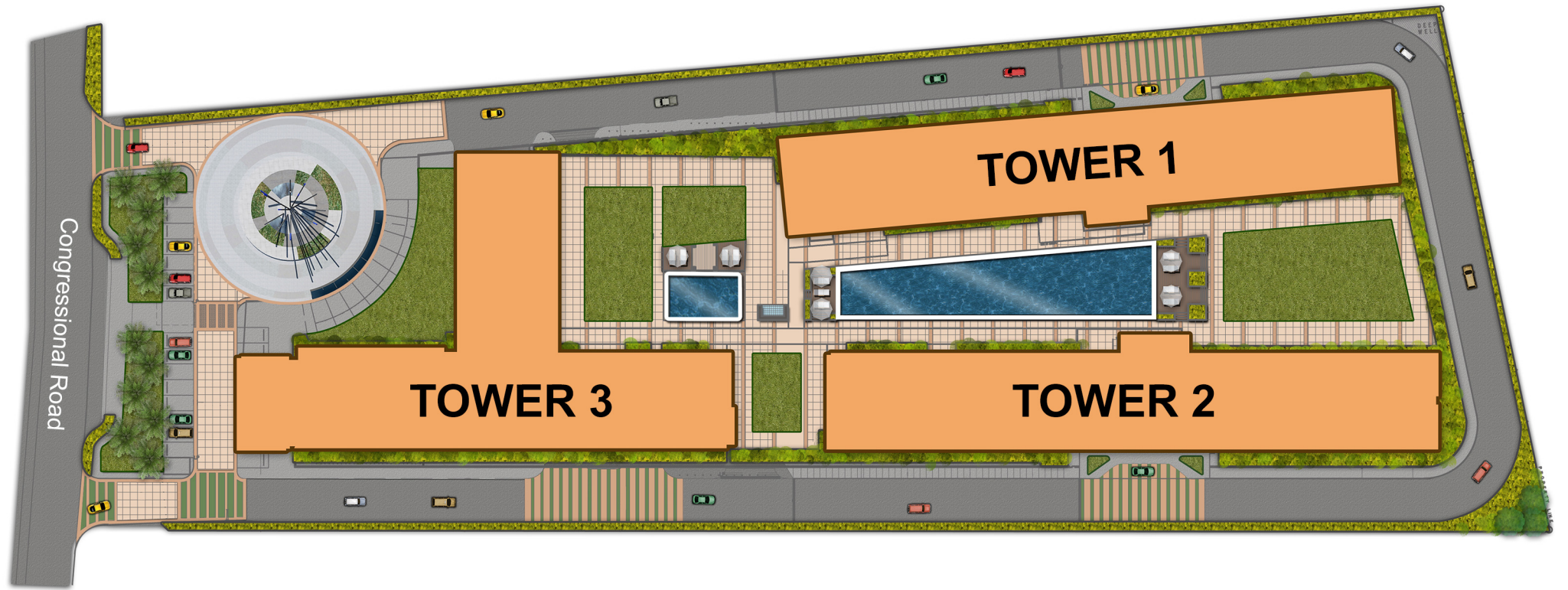
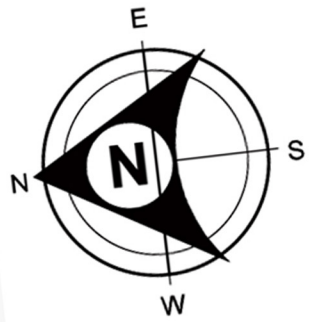


Study Hall, Artist's Perspective

AMENITIES FOR A BALANCED STUDY-AND-PLAY LIFE

The well-planned amenities are designed to create a nurturing, safe and secure space. Thrive in an environment that lets you focus on achieving goals while providing you with options for a much-needed leisure time. There are features that create a conducive environment for studying and downtime while other areas are dedicated for a more active routine.

Experience that balance between study and play with the following amenities that match the needs of our residents.



COMMERCIAL
AREA

**CONVENIENCE OF HAVING
ITS OWN COMMERCIAL AREA**

Green 2 Residences offers a retail strip located inside the development, giving residents incomparable convenience of having varied options when it comes to dining and daily necessities.



Main Lobby, Artist's Perspective







Main Lobby, Artist's Perspective

A LIVELY GREETING




The lobby is the entrance to everyone's hub in the building. It is the perfect place to meet and greet your friends and welcome them into the development.



STUDY

-  Covered Porch
-  Function Hall
-  Study Hall
-  Open Lawns

PLAY

-  Swimming Pool
-  Gazebo
-  Gym



Dressed-Up Unit, Artist's Perspective



Dressed-Up Unit, Artist's Perspective

OWN YOUR SPACE

Green 2 Residences offers units that gives the ideal space for students. It gives an environment that allows people to study and rest in comfort.

Suggested Typical
Studio Unit



+/- 18.98 sqm

Suggested Typical
2-BR End Unit



+/- 31.57 sqm

CONVENIENT SPACES

Our unit configurations are carefully designed to enrich your living experience. Each offers comfortable living spaces that are conducive to both study and play, allowing room for growth and the right balance.

PROPERTY MANAGEMENT

As a homeowner, you need to have that peace of mind knowing that your home is well taken care of. The professional services of Greenmist Property Management (GPMC) not only keeps your community properly maintained, it is also a way for you to add significant value to your investment. SMDC offers a wide variety of services encompassing the entire breadth of tenant needs including security, building facilities and amenity maintenance.



Stock Photo

RANGE OF SERVICES

Our broad set of services encompass the entire scale of leasing services down to the smallest of details

- Property Marketing
- Unit viewing arrangements
- Negotiation of lease terms
- Preparation of lease contract
- Tenant move in assistance



Stock Photo

ABOUT SMDC LEASING FOR UNIT OWNERS

SMDC property is more than just a home, but an investment – an asset intended to yield returns over time. At SMDC, our commitment to our home owners does not end when we give turnover the key -- we enable our homeowners to realize the maximum return of investment on their property through SMDC's Leasing Service.



Stock Photo

Green 2

RESIDENCES
DASMARIÑAS, CAVITE

TOWER 1 TWENTY-SECOND FLOOR




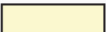



EAST VIEW



AMENITY VIEW

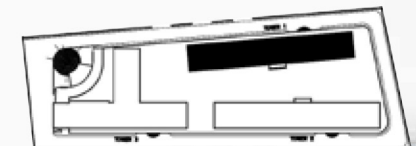
LEGEND

STUDIO UNITS

-  TYPE A - STUDIO UNIT (DOUBLE COLUMN)
-  TYPE B - STUDIO UNIT (SINGLE COLUMN)
-  TYPE C - STUDIO UNIT (WITHOUT COLUMN)
-  TYPE D - STUDIO UNIT (BESIDE F.E. / ELEVATOR)
-  TYPE E - STUDIO END UNIT

2-BEDROOM UNIT

-  TYPE H - 2-BEDROOM END UNIT



KEY PLAN

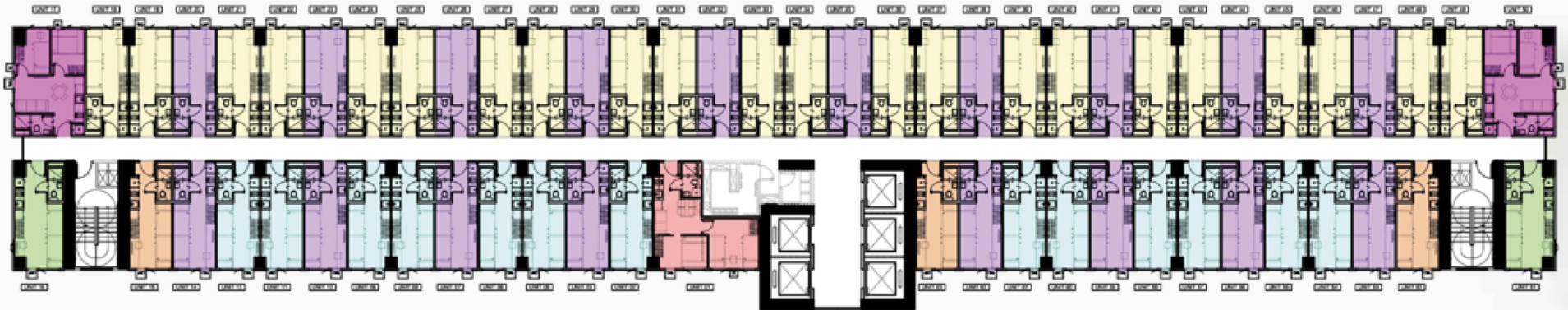
Green 2

RESIDENCES
DASMARIÑAS, CAVITE

TOWER 1 TYPICAL FLOOR (3RD - 21ST FLOOR)



EAST VIEW



AMENITY VIEW

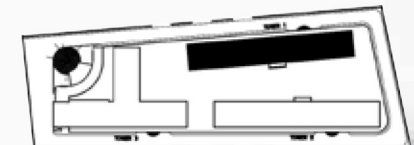
LEGEND

STUDIO UNITS

- TYPE A - STUDIO UNIT (DOUBLE COLUMN)
- TYPE B - STUDIO UNIT (SINGLE COLUMN)
- TYPE C - STUDIO UNIT (WITHOUT COLUMN)
- TYPE D - STUDIO UNIT (BESIDE F.E.) ELEVATOR)
- TYPE E - STUDIO END UNIT

2-BEDROOM UNIT

- TYPE H - 2-BEDROOM END UNIT



KEY PLAN

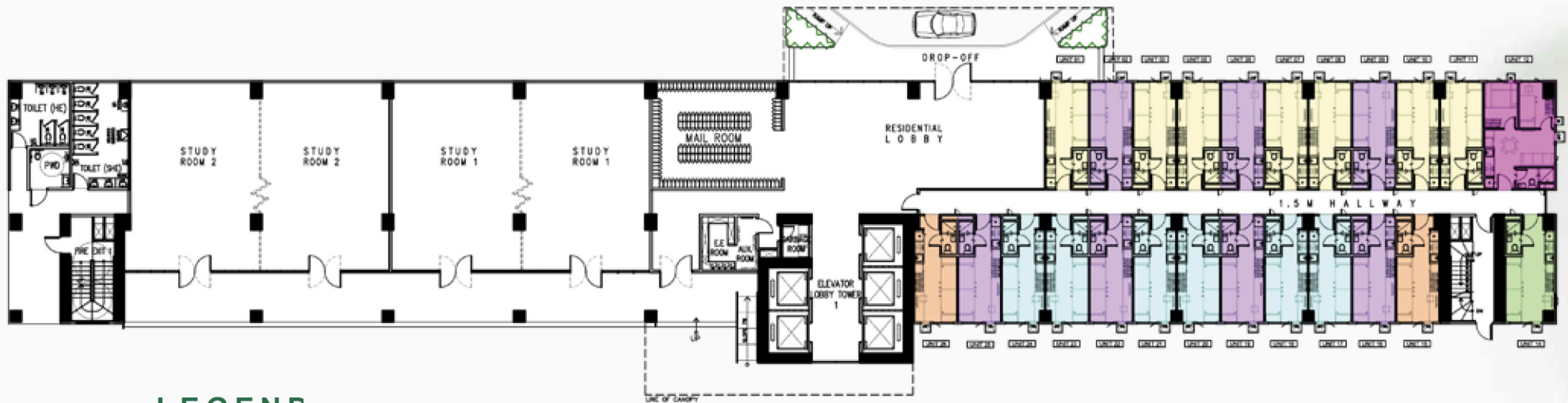
Green 2

RESIDENCES
DASMARIÑAS, CAVITE

TOWER 1 SECOND FLOOR (AMENITY)



EAST VIEW



AMENITY VIEW

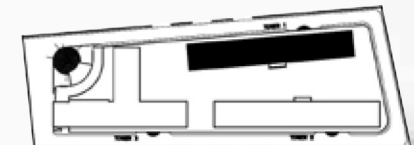
LEGEND

STUDIO UNITS

- TYPE A - STUDIO UNIT (DOUBLE COLUMN)
- TYPE B - STUDIO UNIT (SINGLE COLUMN)
- TYPE C - STUDIO UNIT (WITHOUT COLUMN)
- TYPE D - STUDIO UNIT (BESIDE F.E./ ELEVATOR)
- TYPE E - STUDIO END UNIT

2-BEDROOM UNIT

- TYPE H - 2-BEDROOM END UNIT



KEY PLAN

SMDC

Every single day, SM touches the lives of millions of people through its stores, malls, banks, hotels and leisure facilities. And now, Filipinos can live in style, comfort and convenience at SM Development Corporation (SMDC).

SMDC commits itself to provide access to luxurious urban living through vertical villages perfectly integrated with a commercial retail environment, giving its residents a truly cosmopolitan lifestyle.

SMDC developments are strategically situated in key areas across Metro Manila specifically the Central Business Districts of Mall of Asia Complex, Makati, Ortigas, Taguig, Quezon City, Pasay, Parañaque, Mandaluyong and Las Piñas.

They can also easily be accessed from neighboring provinces like Cavite, Bulacan and Pampanga.

www.smdc.com

    TheOfficialSMDC

HLURB TLTS-17-001-04 . HLURB AA XXXX/XX-XXXX

Location: Governor's Drive, Mangubat Ave., Brgy. Burol Main, Dasmariñas, Cavite

Completion Date: October 31, 2021

Developer: Vancouver Lands Inc.